

Mallard Island

4 Bedrooms

2 1/2 Bath



Elevation ASR1

Comfort Homes of Georgia

For illustrative purposes only. All information is believed to be accurate but is not warranted. Plans, elevations and options are subject to change without notice. Square footage is approximate.

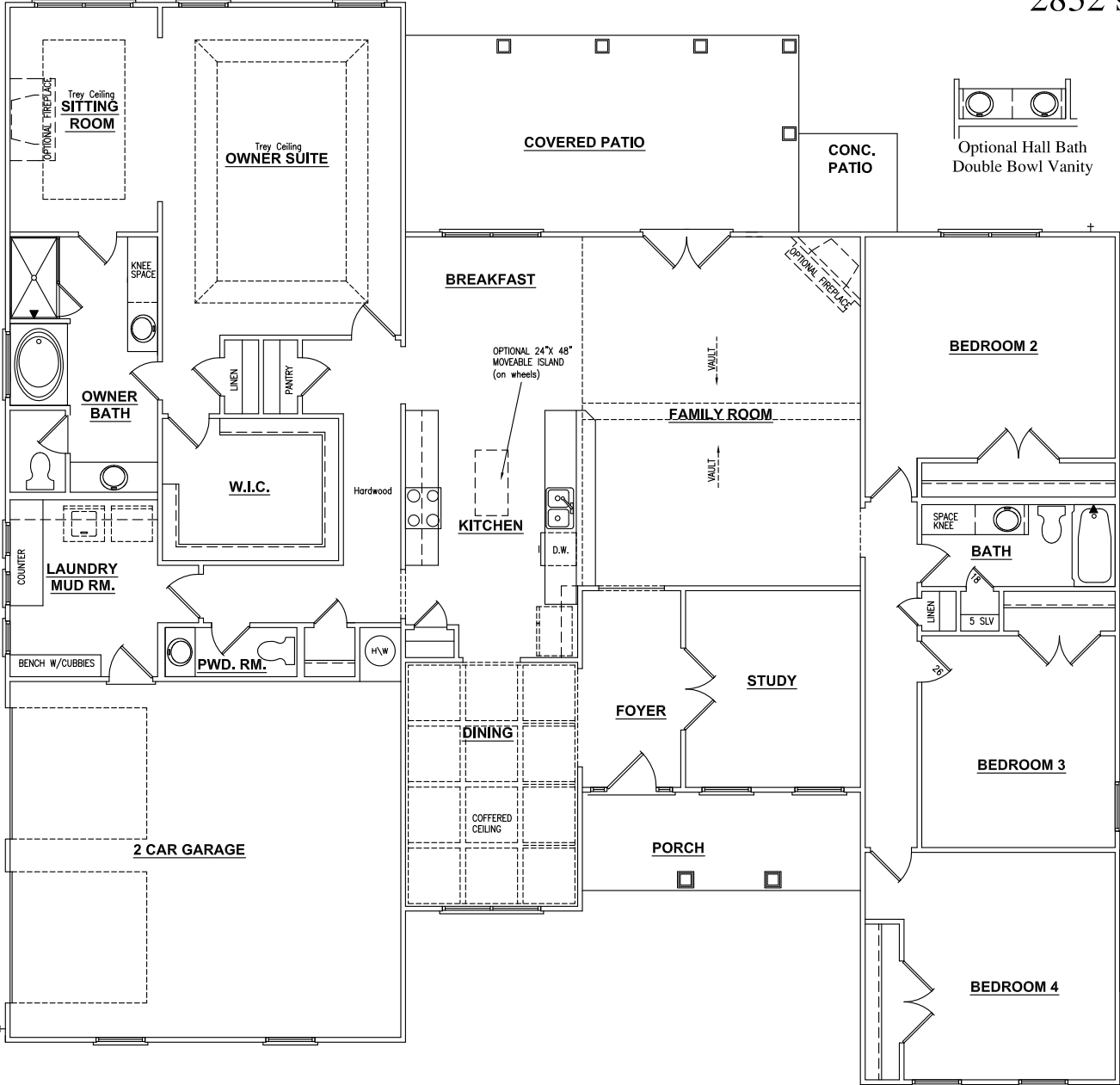
www.ComfortHomes.me



5.26.16

Mallard Island

4 Bedrooms
2 1/2 Bath
2832 sq. ft.



First Floor Plan

For illustrative purposes only. All information is believed to be accurate but is not warranted. Plans, elevations and options are subject to change without notice. Square footage is approximate.

